

The Expected Value Premium

Long Chen*

The Eli Broad College of Business
Michigan State University

Ralitsa Petkova[†]

Weatherhead School of Management
Case Western Reserve University

Lu Zhang[‡]

Stephen M. Ross School of Business
University of Michigan
and NBER

April 2007[§]

Abstract

Fama and French (2002) estimate the equity premium using dividend growth rates to measure expected rates of capital gain. We apply their method to study the value premium. From 1945 to 2005, the expected value premium is on average 6.1% per annum, consisting of an expected dividend-growth component of 4.4% and an expected dividend-price-ratio component of 1.7%. Unlike the equity premium, the value premium has been largely stable in the last half century.

*Department of Finance, Eli Broad College of Business, Michigan State University, 321 Eppley Center, East Lansing MI 48824. Tel: (517) 353-2955, fax: (517) 432-1080, and e-mail: chen@bus.msu.edu.

[†]Department of Banking and Finance, Weatherhead School of Management, Case Western Reserve University, 10900 Euclid Avenue, Cleveland OH 44106. Tel: (216) 368-8553, and e-mail: Ralitsa.Petkova@case.edu.

[‡]Address correspondence to: Lu Zhang, Finance Department, Stephen M. Ross School of Business, University of Michigan, 701 Tappan Street, ER 7605 Bus Ad, Ann Arbor MI 48109-1234. Tel: (734) 615-4854, fax: (734) 936-0282, and e-mail: zhanglu@bus.umich.edu.

[§]We acknowledge helpful comments from George Constantinides, Bob Dittmar, Andrea Frazzini (the discussant), Denitza Gintcheva, Han Kim, Bill Schwert (the editor), and seminar participants at Kent State University, Case Western Reserve University, University of Texas at Austin, Texas A&M University, the American Finance Association Annual Meetings in 2007. We are especially grateful to an anonymous referee for extensive comments that greatly helped improve the paper. The first draft of this paper was completed while Lu Zhang was on the faculty of University of Rochester's William E. Simon Graduate School of Business Administration, whose support is gratefully acknowledged. We are responsible for any remaining errors.

1 Introduction

Value stocks (stocks with high book-to-market ratios) earn higher average returns than growth stocks (stocks with low book-to-market ratios). (See, for example, Rosenberg, Reid, and Lanstein 1985; Fama and French 1992; Lakonishok, Shleifer, and Vishny 1994.) We ask whether the value premium (the average return of value stocks minus the average return of growth stocks) exists ex-ante. Our main finding is that the expected value premium has been stable at around 6.1% per annum in the last half century.

Our economic question is important. Since the seminal contributions of Fama and French (1992, 1993, 1996), the value premium has become arguably as important as the equity premium in asset allocation, investment management, capital budgeting, security analysis, and many other applications. Most studies use average realized returns as the proxy for expected returns. But average returns are noisy (e.g., Elton 1999; Fama and French 2002), and do not necessarily converge to expected returns in finite samples. As pointed out by Elton, there are periods longer than ten years during which the stock market return is on average lower than the risk-free rate (1973–1984), and periods longer than 50 years during which risky bonds underperform the risk-free rate on average (1927–1981). Fama and French also argue convincingly that the estimates of expected returns from economic fundamentals are more precise than the estimates from average returns.

Our idea is basically the idea of Fama and French (2002), who estimate the equity premium using dividend growth rates to measure expected rates of capital gain. We apply this insight to estimate the value premium. The expected stock return is the expected dividend price ratio plus the expected rate of capital gain:

$$E[R_{t+1}] = E\left[\frac{D_{t+1}}{P_t}\right] + E\left[\frac{P_{t+1}}{P_t}\right] \quad (1)$$

where $E[R_{t+1}]$ is the expected stock return, P_t is the stock price at the beginning of period t , D_{t+1} is the dividend paid over the period t and is known at the beginning of period $t+1$. Suppose the

dividend price ratio is stationary (mean reverting). Then the compound rate of dividend growth approaches the compound rate of capital gain if the sample period is long (Fama and French, p. 638). Thus, we can measure the expected stock return as:

$$E[R_{t+1}] = E \left[\frac{D_{t+1}}{P_t} \right] + E[Ag_{t+1}] \quad (2)$$

where Ag_{t+1} is the long-term dividend growth rate (see Section 2.1 for its precise definition).

Our results are easy to summarize. From 1945 to 2005, the expected value premium constructed from a two-by-three sort on size and book-to-market à la Fama and French (1993) is on average 6.1% per annum. This premium consists of an expected dividend-growth component of 4.4% and an expected dividend-price-ratio component of 1.7%. In the 1963–2005 subsample, the expected value premium is on average 6.4% per annum, consisting of an expected dividend-growth component of 4.2% and an expected dividend-price-ratio component of 2.2%. A major portion of the value premium thus comes from the dividend-growth component. Further, unlike the equity premium that has declined over time (e.g., Fama and French 2002), the expected value premium has been largely stable in the last half century.

Our work adds to the growing literature that uses valuation models to estimate expected stock returns (e.g., Blanchard 1993; Claus and Thomas 2000; Gebhardt, Lee, and Swaminathan 2000; Jagannathan, McGrattan, and Scherbina 2000; Constantinides 2002; Fama and French 2002). As noted, we study the value premium. Section 2 delineates our estimation methods. Section 3 describes our sample. Section 4 measures the expected value premium. Section 5 interprets our results.

2 Experimental Design

2.1 The Basic Idea

Following Fama and French (2002), we estimate the expected rates of capital gain using dividend growth rates. Our underlying premise is that the dividend price ratio for an investment strategy is stationary, even though the strategy involves a changing set of firms. Stationarity implies that

if the sample is long, the dividend growth rate approaches the rate of capital gain.

More precisely, let R_{t+1} denote the one-year realized real stock return from time t to $t+1$, that is, $1+R_{t+1}=(D_{t+1}+P_{t+1})/P_t$. Following Blanchard (1993), we solve the equation recursively forward (assuming that the dividend price ratio does not explode) to get P_t as the present discounted value of future dividends. Dividing both sides by D_t , taking conditional expectations at time t , and linearizing yield the expected return at time t as:

$$\mathbb{E}_t[R_{t+1}] = \mathbb{E}_t \left[\frac{D_{t+1}}{P_t} \right] + \mathbb{E}_t[Ag_{t+1}] \quad (3)$$

Ag_{t+1} is the long-run dividend growth rate defined as the annuity of future dividend growth:

$$Ag_{t+1} \equiv \left[\frac{\bar{r} - \bar{g}}{1 + \bar{r}} \right] \sum_{i=0}^{\infty} \left[\frac{1 + \bar{g}}{1 + \bar{r}} \right]^i g_{t+i+1} \quad (4)$$

where \bar{g} and \bar{r} are the average real growth rate of dividends and the average real stock return, respectively, and g_{t+i+1} denotes the realized real growth rate of dividends from time $t+i$ to $t+i+1$.

From equation (3), the expected return is the expected dividend price ratio plus the expected long-run dividend growth rate, conditional on the information set at time t . This method of estimating expected returns is a dynamic extension of the dividend growth model in Fama and French (2002). In our context, equation (3) implies that the expected value premium is the sum of the difference in the expected dividend price ratio and the difference in the expected long-run dividend growth rate between value and growth portfolios.

2.2 Estimation Details

To provide a precise description of our procedure used to measure realized dividend growth rates of portfolios, we introduce additional notations borrowed from Fama and French (2005). Let:

P_t = market value at time t of the securities allocated to the portfolio when it is formed at time t .

$P_{t,t+1}$ = market value at time $t + 1$ of the securities allocated to the portfolio at time t .

$D_{t,t+1}$ = dividends paid between t and $t + 1$ on the securities allocated to the portfolio at time t .

$R_{t,t+1}$ = return (with dividends) observed at time $t + 1$ on a portfolio formed at time t .

$R_{t,t+1}^X$ = return (without dividends) observed at time $t + 1$ on a portfolio formed at time t .

Whenever there are two time subscripts on a given variable, the first subscript indicates the time when the portfolio is formed; the second indicates the time when the variable is observed. For simplicity, we use P_t rather than $P_{t,t}$ as the market value of a portfolio when formed at time t .

Dividend Price Ratios

For each portfolio, we first construct the real dividend price ratio from the value-weighted realized stock returns with and without dividends and the Consumer Price Index (CPI) from the U.S. Bureau of Labor Statistics:

$$\frac{D_{t,t+1}}{P_t} = (R_{t,t+1} - R_{t,t+1}^X) \left(\frac{\text{CPI}_t}{\text{CPI}_{t+1}} \right) \quad (5)$$

Because monthly total returns are compounded to get annual returns in the Center for Research in Securities Prices (CRSP), the dividend price ratio includes dividends and the reinvestment returns earned from the time when a dividend is paid to the end of the annual return period.

Dividend Growth Rates

We measure portfolio real dividend growth rates as:

$$g_{t+1} = \left(\frac{D_{t,t+1}/P_t}{D_{t-1,t}/P_{t-1}} \right) (R_{t-1,t}^X + 1) \left(\frac{\text{CPI}_{t-1}}{\text{CPI}_t} \right) - 1 = \left(\frac{D_{t,t+1}/P_t}{D_{t-1,t}/P_{t-1}} \right) \left(\frac{P_{t-1,t}}{P_{t-1}} \right) - 1 \quad (6)$$

where the second equality follows because $(R_{t-1,t}^X + 1) (\text{CPI}_{t-1}/\text{CPI}_t) = P_{t-1,t}/P_{t-1}$ (real rates of capital gain). The second equality says that the dividend growth rate is: (dividends at $t+1$ per dollar invested at t multiplied by dollars invested at t)/(dividends at t per dollar invested at $t-1$ multiplied by dollars invested at $t-1$). It is clear that the reinvested capital gains, $(P_{t-1,t}/P_{t-1})$, are an impor-

tant part of the dividend growth rates. Higher reinvested capital gains from $t-1$ to t mean more dollars to invest at t , which in turn mean higher dividend growth rates (given the dividend price ratios).

For example, suppose at the end of June of year $t - 1$, an investor invests \$100 in the value portfolio that value weights a set of value stocks ($P_{t-1} = \$100$). The value portfolio has a dividend price ratio of 5% ($D_{t-1,t}/P_{t-1} = 5\%$), so at the end of June of year t the investor gets \$5 as dividends. Because of capital gains, the market value of the value portfolio becomes \$110 at the end of June of year t ($P_{t-1,t} = \$110$). The investor thus has more dollars to invest in the time- t value portfolio that value weights a new set of value stocks. Suppose the new portfolio has a dividend price ratio of 6% ($D_{t,t+1}/P_t = 6\%$). At the end of June of year $t + 1$, the investor receives dividends of $\$110 \times 6\% = \6.6 . The dividend growth rate from the end of June of year t to the end of June of year $t+1$ is $\$6.6/\$5 - 1 = 32\%$, which is exactly what equation (6) gets: $(6\%/5\%)(\$110/\$100) - 1 = 32\%$.

Our calculations of dividend price ratios and dividend growth rates do not involve double counting. The returns earned from reinvesting dividends within a year indeed appear in both dividend price ratios and dividend growth rates. But if investors reinvest dividends within a year, dividends used in calculating dividend growth rates should include both cash dividends and reinvestment returns. Because we treat dividends consistently when calculating dividend price ratios and dividend growth rates, our results have a clean economic interpretation.

Long-run Dividend Growth Rates

We construct the long-run dividend growth rate, Ag_{t+1} , based on equation (4).

Following Blanchard (1993), we estimate \bar{r} as the sample average of the realized real equity returns and \bar{g} as the sample average of the real dividend growth rates. From equation (4), Ag_{t+1} is an infinite sum of future real dividend growth rates. In practice, we use a finite sum of 100 years of future growth. We assume that future real dividend growth rates beyond 2005 equal the average dividend growth rate in the 1963–2005 sample. Using the full 1945–2005 sample average yields quantitatively similar results (not reported).

Expected Long-run Growth Rates and Expected Dividend Price Ratios

Following Blanchard (1993), we perform annual predictive regressions of Ag_{t+1} and D_{t+1}/P_t on a set of conditioning variables. We use the simulation method of Nelson and Kim (1993) to adjust for the Stambaugh (1999) small-sample bias. The fitted values from these regressions provide the time series of the expected long-run dividend growth and the expected dividend price ratio. The sum of these two components provides the time series of the expected returns.

Our choice of the set of conditioning variables is standard from the time series literature. These variables include: (i) the aggregate dividend yield, computed as the sum of dividend payments accruing to the CRSP value-weighted market portfolio over the previous 12 months, divided by the contemporaneous level of the index (e.g., Fama and French 1988);¹ (ii) the default premium, defined as the yield spread between Moody's Baa and Aaa corporate bonds from the monthly database of the Federal Reserve Bank of St. Louis (e.g., Keim and Stambaugh 1986; Fama and French 1989); (iii) the term premium, defined as the yield spread between long-term and one-year Treasury bonds from Ibbotson Associates (e.g., Campbell 1987; Fama and French 1989); and (iv) the one-month Treasury bill rate from CRSP (e.g., Fama and Schwert 1977; Fama 1981).

Previous studies (e.g., Cohen, Polk, and Vuolteenaho 2003; Campbell and Vuolteenaho 2004) find that the value spread—the log book-to-market of the value decile minus the log book-to-market of the growth decile from a one-way sort on book-to-market—can predict future value-minus-growth returns. Given our focus on the value premium, we also use the value spread to predict the long-run dividend growth rates and the dividend price ratios.² The data on the year-end book-to-market ratios of the extreme book-to-market deciles are from Kenneth French's Web site.

¹We call $D_{t-1,t}/P_t$ dividend yield (observable at the beginning at time t), and we call $D_{t,t+1}/P_t$ dividend price ratio (observable only at the end of time t).

²Our results are not materially affected by alternative sets of instruments such as excluding the value spread from or including Lettau and Ludvigson's (2001a, 2005) *cay* and *cdy* variables into the set of instruments (not reported).

3 Data

We obtain data from three main sources. The first is the CRSP monthly stock file that contains information on stock prices, shares outstanding, dividends, and returns with and without dividends for NYSE, AMEX, and Nasdaq stocks. The second source is the COMPUSTAT annual research file that provides accounting information for publicly traded U.S. firms. To alleviate the potential survivor bias due to backfilling data, we require that firms appear in COMPUSTAT for at least two years before using the data. The third source is Moody's book equity information in Davis, Fama, and French (2000) from Kenneth French's Web site.

Our sample is from 1945 to 2005. In earlier years, the proportion of firms paying dividends in the one-way sorted value quintile is low (around 10% from 1930 to 1940) and extremely unstable. This instability leads to unrealistically large swings in the resulting portfolio dividend growth rates. Further, as pointed out by Cohen, Polk, and Vuolteenaho (2003), potential problems with disclosure regulations also affect the starting date of the sample period.³

Our definition of book equity is from Fama and French (1993). Book equity is the stockholder equity plus balance sheet deferred taxes (item 74) and investment tax credit (item 208 if available) plus post-retirement benefit liabilities (item 330 if available) minus the book value of preferred stock. Depending on data availability, we use redemption (item 56), liquidation (item 10), or par value (item 130), in this order, to represent the book value of preferred stock. Stockholders' equity is equal to Moody's book equity (whenever available) or the book value of common equity (item 60) plus the par value of preferred stock. If neither is available, stockholder equity is calculated as the book value of assets (item 6) minus total liabilities (item 181).

We construct value and growth portfolios by sorting on book-to-market ratios. We implement both a one-way sort to obtain five book-to-market quintiles and a two-way, two-by-three sort on size

³Before the Securities Exchange Act of 1934, there was essentially no regulation to ensure the flow of accurate and systematic accounting information. The Act prescribes specific annual and periodic reporting and record-keeping requirements for publicly traded companies.

and book-to-market to obtain six portfolios à la Fama and French (1993). We denote the one-way sorted portfolios as quintiles Low, 2, 3, 4, and High. The difference between quintiles High and Low, denoted $p5-1$, represents the value strategy from the one-way sort. We construct six portfolios (denoted $S/L, B/L, S/M, B/M, S/H$, and B/H) from the two-way sort. In particular, the S/L portfolio contains the stocks in the small-size group that are also in the low book-to-market group, and the B/H portfolio contains the big-size stocks that are also in the high book-to-market group. The two-way sorted value strategy, denoted HML , is defined as $(S/H + B/H)/2 - (S/L + B/L)/2$.

Our timing in portfolio construction differs slightly from that used in Fama and French (1993). Instead of at the end of June, we form portfolios at the end of December for each year t . Portfolio ranking is effective from January to December of year $t+1$. We use book equity from the fiscal year ending in calendar year $t-1$ divided by market equity at the end of December of year t . Doing so avoids any look-ahead bias that might arise because accounting information from the current fiscal year is sometimes not available at the end of the calendar year. We choose this timing because it is more in line with the timing of dividend growth. Our different timing is not a source of concern, however. Using more lagged information on book value makes it harder to find a positive expected value premium. And using the conventional timing yields quantitatively similar results (not reported).

Our method is essentially a dynamic extension of Fama and French's (2002) method for estimating the equity premium. Before we report our value premium estimates, it is important to ask whether our equity premium estimates are comparable to theirs. The answer is affirmative.

During the 1951–2000 period studied by Fama and French (2002), our estimates of the expected aggregate real dividend growth rate, the expected aggregate real dividend price ratio, the expected real equity market return, and the average realized real market return are 1.35%, 3.74%, 4.93%, and 9.11% per annum, respectively. These estimates are close to those reported by Fama and French, 1.05%, 3.70%, 4.75%, and 9.62%, respectively. Our equity premium estimate is also much lower than the average realized market excess return. From 1945 to 2005, the equity premium is 5.19% per an-

num, lower than the realized equity premium, 8.46%, consistent with Fama and French’s conclusion that “the average stock return of the last half-century is a lot higher than expected (p. 637).”

As in Fama and French (2002), our estimated equity premium also has declined over time. The equity premium reaches its peak of about 9.5% per annum in the early 1950s, declines over the next two decades to about 2.5% in the mid-1970s, climbs up to about 5.5% in the mid-1980s, declines again over the next one and a half decades to about 2% in the early 2000s.

4 Main Results

4.1 Sources of the Expected Value Premium

The expected *HML* return is on average 6.1% per annum from 1945 to 2005.

Point Estimates

From the first two rows of all panels in Table 1, the value strategies earn reliably positive average returns. The average return of the one-way sorted p5-1 is 4.8% per annum (t -statistic = 2.78) in the 1945–2005 full sample and 5.2% (t -statistic = 2.33) in the 1963–2005 subsample. (The t -statistics are adjusted for autocorrelations of up to six lags.) *HML* has an average return of 5.2% per annum in the full sample and 6.2% in the subsample with t -statistics both above four.

The expected value premium is reliably positive. From the seventh and eighth rows in all panels of Table 1, the average expected dividend price ratio is higher for value firms than for growth firms. Because the expected long-run dividend growth and the expected dividend price ratio are both higher for value portfolios, their expected returns are higher than the expected returns of growth portfolios. The expected return of p5-1 is 4.9% per annum in the full sample and 5.1% in the subsample. And the expected *HML* return is 6.1% per annum in the full sample and 6.4% in the subsample. All the expected return estimates have t -statistics higher than those of the average realized returns, suggesting that expected returns are more precisely estimated than average returns.

Noteworthy, the expected returns of the individual portfolios are generally lower than their

average realized returns (except for quintile two in the subsample). Fama and French (2002) report a similar discrepancy between expected returns and average returns for the market portfolio and argue that average returns are a lot higher than expected. We reinforce their conclusion by showing that it also holds for size and book-to-market portfolios. However, both p5-1 and *HML* have expected returns close to their average returns. This evidence suggests that the difference between expected returns and average returns is similar in magnitude across value and growth portfolios.

Table 1 shows that an important source of the expected value premium is the expected long-run dividend growth, Ag_{t+1} . From the one-way sort, the expected long-run dividend growth accounts for about one half of the average expected p5-1 return in both samples. The average long-run dividend growth of *HML* is 4.4% per annum in the full sample and 4.2% in the subsample, contributing more than 65% of the expected *HML* return in their respective samples.

Dividend Growth Rates

Given the importance of long-run dividend growth, we present detailed evidence on dividend growth rates. From rows three and four in all panels of Table 1, the one-year-ahead real dividend growth rates, g_{t+1} , for value portfolios are on average higher than those of growth portfolios, but the differences are often insignificant. For example, the real dividend growth rate of portfolio p5-1 is on average 3.2% per annum in the full sample (t -statistic = 1.31). Controlling for size increases the average growth rate further to 5% for *HML* (t -statistic = 1.88).

Panels A and B of Figure 1 plot the real dividend growth rates for value and growth portfolios from 1945 to 2005. In both one-way and two-way sorts, the real dividend growth rates of the value portfolios are frequently higher than those of the growth portfolios. The dividend growth rates are also volatile. From 1945 to 2005, the volatilities of the dividend growth rates for the value and growth quintiles are 24.03% and 20.81% per annum, close to the volatilities of their stock returns, 21.15% and 18.24%, respectively. For the two-way sorts, the volatilities of the dividend growth rates for the value and growth portfolios are 18.40% and 17.76%, again close to the volatilities

of their stock returns, 21.05% and 19.15%, respectively. The high volatilities of dividend growth rates are likely driven by the high volatilities of the reinvested capital gains and by the changes in portfolio composition from annual rebalancing.⁴

Our evidence that value portfolios have higher dividend growth rates than growth portfolios does not contradict the conventional wisdom that growth firms have more growth options and grow faster than value firms.⁵ When the portfolios are rebalanced annually, the firms in the growth portfolio next year are not the same as the firms in the portfolio this year. With different sets of firms, there is no particular reason to expect the dividend growth of growth portfolios to be higher than that of value portfolios. More important, higher dividend growth rates of value portfolios from year t to $t+1$ come from higher reinvested capital gains from year $t-1$ to t that mean more dollars to invest at t . Our definition of dividend growth rates captures the reinvested capital gains. The dividend growth rates of value portfolios will be lower without reinvesting these capital gains.

4.2 Dynamics for the Expected Value Premium

Unlike the equity premium, the expected value premium has been stable in the last half century.

Trend Dynamics

From Panel A of Figure 2, the expected *HML* return is positive throughout our sample.⁶ From Panel B, the expected long-run dividend growth for *HML* declines somewhat from the mid-1940s to the early 1980s, but increases thereafter. The expected dividend price ratio displays the opposite long-term movements. Because of the opposite movements, there is no noticeable long-term trend in the expected *HML* return. And to isolate its cyclical component from the low-frequency component, we use the Hodrick and Prescott (1997, HP hereafter) filter. From Panel C, there is no downward trend in the low-frequency component of the expected *HML* return.

⁴We thank the referee for making this important point.

⁵Bodie, Kane, and Marcus (2008, p. 116) provide an exposition of the conventional wisdom: “[G]rowth stocks have high ratios, suggesting that investors in these firms must believe that the firm will experience rapid growth to justify the prices at which the stocks sell.”

⁶Using the one-way sorted portfolio returns yields largely similar results (not reported).

In untabulated results, we use the ten-year moving averages of realized *HML* returns as another measure of the slow-moving component of the value premium. This experiment is valid because the expected and the average *HML* returns are close (see Table 1). The ten-year moving average *HML* return has been quite stable, although it declines from around 6% per annum in the early 1990s to about 1% in 1999. This evidence confirms Schwert's (2003) observation that the magnitude of the value premium has declined over the 1990s. Schwert's sample stops at May 2002, however. The ten-year moving average *HML* return spikes upward to around 5% in the last few years.

Cyclical Dynamics

The expected value premium is weakly countercyclical.

Panel D of Figure 2 plots the HP-filtered cyclical component of the expected *HML* return along with a recession dummy. We treat a given year as a recession year if it has at least five recession months according to the National Bureau of Economic Research (NBER). From Panel D, the expected *HML* return peaks in most of the recessions in the sample.

We also examine the lead-lag correlations between the expected value premium and a list of business cycle indicators. The list of cyclical indicators includes the NBER recession dummy, default premium, real investment growth, and real consumption growth. The data for the latter three indicators are from the Federal Reserve Bank of St. Louis. The default premium and the recession dummy are countercyclical, whereas the real consumption and investment growth are procyclical.

From Table 2, the expected value premium correlates negatively with the procyclical variables and positively with the countercyclical variables. The contemporaneous correlations of the expected *HML* return with real investment growth and real consumption growth are -0.27 and -0.49 (p -values testing zero correlations = 0.04 and 0.00), respectively. The contemporaneous correlations of the expected *HML* return with the default premium and the recession dummy are 0.38 and 0.60 (p -values = 0.00), respectively. Other lead-lag correlations follow largely similar patterns, but have smaller magnitudes. The evidence is similar for the post-1963 sample.

To evaluate the economic significance of the cyclical behavior of the expected value premium, we adopt a more formal VAR framework. The VAR contains one cyclical indicator and the expected *HML* return. Using the expected p5-1 return yields quantitatively similar results (not reported). We use two cyclical variables separately in the VAR: the real investment growth and the real consumption growth. The lag in the VAR is one, based on the Akaike information criterion.

The VAR specification for the real investment growth, for example, is given by:

$$\begin{bmatrix} g_{t+1}^{\text{INV}} \\ X_t \end{bmatrix} = A \begin{bmatrix} g_t^{\text{INV}} \\ X_{t-1} \end{bmatrix} + \begin{bmatrix} \varepsilon_{t+1}^g \\ \varepsilon_t^X \end{bmatrix} \quad (7)$$

where g_{t+1}^{INV} denotes the real investment growth from time t to $t+1$, and X_t is the expected *HML* return measured at the beginning of time t . The timing in equation (7) allows shocks to contemporaneous real investment growth, g_t^{INV} , to impact the expected value premium at time t . The shocks also can affect future expected value premium because of the autocorrelations of the variables in the system. The VAR system thus can help us gauge the magnitude of the impulse response of the expected value premium in the event of macroeconomic shocks.

The coefficients of the real investment growth and the real consumption growth in the expected *HML* return equation in the VAR are all significantly negative (untabulated). Figure 3 plots the impulse response functions implied from the estimated VARs. From Panel A, a positive, one-standard-deviation shock to the real investment growth reduces the expected *HML* return by around 0.50% per annum. Panel B reports similar results using the real consumption growth. The magnitude of the response is low relative to the magnitude of the expected value premium.

5 Interpretation

Our new evidence adds to our understanding of the driving forces behind the value premium. Three different explanations coexist in the current literature. The first story says that the value premium results from rational variations of expected returns (e.g., Fama and French 1993, 1996). The second story says that investor sentiment causes the high premium for value stocks (e.g., De Bondt

and Thaler 1985; Lakonishok, Shleifer, and Vishny 1994). The third story argues that the value premium results spuriously from sample-selection bias (e.g., Kothari, Shanken, and Sloan 1995) and data-snooping bias (e.g., MacKinlay 1995; Conrad, Cooper, and Kaul 2003).

The value premium is reliably positive ex-ante. This evidence lends support to Fama and French (1998) and Davis, Fama, and French (2000), who argue that the value premium is real and unlikely to be driven by statistical biases. This view is further buttressed by our evidence that the expected value premium has been stable in the last half century. While largely consistent with Schwert (2003), this evidence suggests that the low profitability of value strategies in the 1990s is more likely to reflect cyclical movements rather than permanent downward shifts in the expected value premium.

Our evidence does not rule out the mispricing story of De Bondt and Thaler (1985) and Lakonishok, Shleifer, and Vishny (1994). Our estimated dividend growth rates capture reinvested capital gains that can reflect the underpricing of value stocks and the overpricing of growth stocks.

The evidence that the expected value premium is countercyclical lends support to the view that value is riskier than growth in bad times when the price of risk is high (e.g., Jagannathan and Wang 1996; Lettau and Ludvigson 2001b; Zhang 2005). However, the magnitude of the negative response in the expected *HML* return to a positive, one-standard-deviation shock to real consumption growth is only about 0.50% per annum. This magnitude is less than one-tenth of the total magnitude of the expected value premium. This evidence lends support to Lewellen and Nagel (2006), who argue that the role of conditioning information in driving the value premium is limited and that unconditional drivers are potentially more important (e.g., Fama and French 1993, 1996).

References

- Blanchard, Olivier J., 1993, Movements in the equity premium, *Brookings Papers on Economic Activity* 2, 75–138.
- Bodie, Zvi, Alex Kane, and Alan J. Marcus, 2008, *Investments*, 7th edition, McGraw-Hill/Irwin.
- Campbell, John Y., 1987, Stock Returns and the term structure, *Journal of Financial Economics* 18, 373–399.
- Campbell, John Y. and Tuomo Vuolteenaho, 2004, Bad beta, good beta, *American Economic Review* 94 (5), 1249–1275.
- Claus, James and Jacob Thomas, 2001, Equity premia as low as three percent? Evidence from analysts' earnings forecasts for domestic and international stock markets, *Journal of Finance* 56, 1629–1666.
- Cohen, Randolph B., Christopher Polk, and Tuomo Vuolteenaho, 2003, The value spread, *Journal of Finance* 58, 609–641.
- Conrad, Jennifer, Michael Cooper, and Gautam Kaul, 2003, Value versus glamour, *Journal of Finance* 58 (5), 1969–1995.
- Constantinides, George M., 2002, Rational asset pricing, *Journal of Finance* LVII (4), 1567–1591.
- Daniel, Kent, David Hirshleifer, and Avanidhar Subrahmanyam, 1998, Investor psychology and capital asset pricing, *Journal of Finance* 53, 1839–1885.
- Davis, James L., Eugene F. Fama, and Kenneth R. French, 2000, Characteristics, covariances, and average returns: 1929 to 1997, *Journal of Finance* 55, 389–406.
- De Bondt, Werner F. M. and Richard Thaler, 1985, Does the stock market overreact? *Journal of Finance* 40, 793–805.
- Elton, Edwin J., 1999, Expected return, realized return, and asset pricing tests, *Journal of Finance* 54, 1199–1220.
- Fama, Eugene F., 1981, Stock returns, real activity, inflation, and money, *American Economic Review* 71, 545–565.
- Fama, Eugene F. and Kenneth R. French, 1988, Dividend yields and expected stock returns, *Journal of Financial Economics* 22, 3–25.
- Fama, Eugene F. and Kenneth R. French, 1989, Business conditions and expected returns on stocks and bonds, *Journal of Financial Economics* 25, 23–49.
- Fama, Eugene F. and Kenneth R. French, 1992, The cross-section of expected stock returns, *Journal of Finance* 47, 427–465.
- Fama, Eugene F. and Kenneth R. French, 1993, Common risk factors in the returns on stocks and bonds, *Journal of Financial Economics* 33, 3–56.
- Fama, Eugene F. and Kenneth R. French, 1996, Multifactor explanations of asset pricing anomalies, *Journal of Finance* 51, 55–84.

- Fama, Eugene F. and Kenneth R. French, 1998, Value versus growth: the international evidence, *Journal of Finance* LIII (6), 1975–1999.
- Fama, Eugene F. and Kenneth R. French, 2002, The equity premium, *Journal of Finance* 57, 637–659.
- Fama, Eugene F. and Kenneth R. French, 2005, The anatomy of value and growth stock returns, working paper, Dartmouth College and University of Chicago.
- Fama, Eugene F. and G. William Schwert, 1977, Asset returns and inflation, *Journal of Financial Economics* 5, 115–146.
- Gebhardt, William R., Charles M. C. Lee, and Bhaskaram Swaminathan, 2001, Toward an implied cost of capital, *Journal of Accounting Research* 39, 135–176.
- Gordon, Myron, 1962, *The investment, financing, and valuation of the corporation*, Burr Ridge, Richard D. Irwin, Illinois.
- Hodrick, Robert J. and Edward C. Prescott, 1997, Postwar U.S. business cycles: An empirical investigation, *Journal of Money, Credit, and Banking* 29, 1–16.
- Jagannathan, Ravi and Zhenyu Wang, 1996, The conditional CAPM and the cross-section of expected returns, *Journal of Finance* 51, 3–54.
- Jagannathan, Ravi, Ellen R. McGrattan, and Anna Scherbina, 2000, The declining U.S. equity premium, *Federal Reserve Bank of Minneapolis Quarterly Review* 24 (4), 3–19.
- Keim, Donald B. and Robert F. Stambaugh, 1986, Predicting returns in the stock and bond markets, *Journal of Financial Economics* 17, 357–390.
- Kothari, S. P., Jay Shanken, and Richard G. Sloan, 1995, Another look at the cross-section of expected stock returns, *Journal of Finance* 50, 185–224.
- Lakonishok, Josef, Andrei Shleifer, and Robert W. Vishny, 1994, Contrarian investment, extrapolation, and risk, *Journal of Finance* 49, 1541–1578.
- Lettau, Martin and Sydney C. Ludvigson, 2001a, Consumption, aggregate wealth, and expected stock returns, *Journal of Finance* 56, 815–849.
- Lettau, Martin and Sydney C. Ludvigson, 2001b, Resurrecting the (C)CAPM: A cross-sectional test when risk premia are time-varying, *Journal of Political Economy* 109, 1238–1287.
- Lewellen, Jonathan and Stefan Nagel, 2006, The conditional CAPM does not explain asset-pricing anomalies, forthcoming, *Journal of Financial Economics*.
- MacKinlay, A. Craig, 1995, Multifactor models do not explain deviations from the CAPM, *Journal of Financial Economics* 38, 3–28.
- Nelson, Charles R. and Myung J. Kim, 1993, Predictable stock returns: the role of small sample bias, *Journal of Finance* 48, 641–661.
- Rosenberg, Barr, Kenneth Reid, and Ronald Lanstein, 1985, Persuasive evidence of market inefficiency, *Journal of Portfolio Management* 11, 9–11.

- Schwert, G. William, 2003, Anomalies and market efficiency, in George Constantinides, Milton Harris, and Rene Stulz, eds.: *Handbook of the economics of finance* North-Holland, Amsterdam.
- Stambaugh, Robert F., 1999, Predictive regressions, *Journal of Financial Economics*, 54, 375–421.
- Stock, James H. and Mark W. Watson, 1999, Business cycle fluctuations in U.S. macroeconomic time series, in James B. Taylor and Michael Woodford, eds.: *Handbook of Macroeconomics* 1, 3–64, North-Holland, Amsterdam.
- Zhang, Lu, 2005, The value premium, *Journal of Finance* 60 (1), 67–103.

Table 1 : Descriptive Statistics for Realized Returns, Realized Dividend Growth, Expected Long-Run Dividend Growth, Expected Dividend Price Ratio, and Expected Returns for Value and Growth Portfolios, All in Real Terms (1945–2005)

This table reports the sample averages of the realized return, $\overline{R_{t+1}}$, the realized dividend growth, $\overline{g_{t+1}}$, the expected long-run dividend growth, $\overline{E_t[Ag_{t+1}]}$, the expected dividend price ratio, $\overline{E_t[D_{t+1}/P_t]}$, and the expected return, $\overline{E_t[R_{t+1}]}$ for various value and growth portfolios. All the series are adjusted for inflation. The t -statistics adjusted for autocorrelations are reported in parentheses below the corresponding sample averages. We report the results for both the full sample from 1945 to 2005 and for the subsample from 1963 to 2005. Panels A and B contain the results for five quintiles sorted on book-to-market. In these two panels, “p5-1” denotes the high-minus-low portfolio constructed from the one-way sorted book-to-market quintiles. Panels C and D contain the results for six portfolios from a two-by-three sort on size and book-to-market à la Fama and French (1993). These six portfolios are denoted by $(S/L, B/L, S/M, B/M, S/H, B/H)$. For example, portfolio S/L contains stocks in the small-size group that are also in the low book-to-market group (30%). Portfolio B/H contains the big-size stocks that are also in the high book-to-market group (30%). HML is defined as $(S/H + B/H)/2 - (S/L + B/L)/2$.

	Panel A: 1945–2005, one-way sort						Panel B: 1963–2005, one-way sort							
	Low	2	3	4	High	p5-1	Low	2	3	4	High	p5-1		
$\overline{R_{t+1}}$	0.076 (3.47)	0.081 (4.61)	0.094 (6.59)	0.108 (6.43)	0.123 (6.65)	0.048 (2.78)	0.061 (2.30)	0.065 (3.14)	0.085 (5.46)	0.112 (5.62)	0.114 (5.51)	0.052 (2.33)		
$\overline{g_{t+1}}$	0.031 (1.72)	0.034 (1.90)	0.033 (2.33)	0.037 (2.30)	0.064 (2.88)	0.032 (1.31)	0.033 (1.30)	0.033 (1.36)	0.034 (1.73)	0.046 (2.47)	0.064 (2.13)	0.031 (0.92)		
$\overline{E_t[Ag_{t+1}]}$	0.030 (7.03)	0.032 (9.84)	0.032 (18.59)	0.037 (32.25)	0.057 (23.88)	0.027 (11.18)	0.034 (11.14)	0.035 (16.03)	0.032 (13.02)	0.037 (24.86)	0.058 (19.31)	0.024 (8.05)		
$\overline{E_t[D_{t+1}/P_t]}$	0.029 (5.48)	0.039 (7.38)	0.045 (10.38)	0.051 (12.45)	0.051 (12.90)	0.022 (7.34)	0.022 (12.04)	0.032 (11.01)	0.040 (9.75)	0.048 (8.49)	0.049 (9.70)	0.026 (7.82)		
$\overline{E_t[R_{t+1}]}$	0.060 (15.23)	0.071 (17.70)	0.077 (21.53)	0.088 (18.24)	0.108 (28.37)	0.049 (31.99)	0.056 (12.60)	0.067 (15.43)	0.072 (36.75)	0.085 (13.59)	0.107 (25.58)	0.051 (51.41)		
	Panel C: 1945–2005, two-way sort							Panel D: 1963–2005, two-way sort						
	S/L	B/L	S/M	B/M	S/H	B/H	HML	S/L	B/L	S/M	B/M	S/H	B/H	HML
$\overline{R_{t+1}}$	0.086 (3.04)	0.078 (3.37)	0.124 (4.80)	0.085 (4.47)	0.151 (5.46)	0.117 (4.99)	0.052 (4.06)	0.076 (2.27)	0.063 (2.28)	0.123 (4.23)	0.075 (3.65)	0.154 (4.97)	0.108 (4.91)	0.062 (4.01)
$\overline{g_{t+1}}$	0.021 (0.82)	0.027 (1.39)	0.055 (2.62)	0.018 (1.25)	0.103 (3.49)	0.044 (2.28)	0.050 (1.88)	0.020 (0.61)	0.024 (0.91)	0.065 (2.35)	0.016 (0.86)	0.105 (3.16)	0.045 (1.82)	0.053 (1.56)
$\overline{E_t[Ag_{t+1}]}$	0.021 (7.88)	0.024 (8.44)	0.055 (17.48)	0.015 (8.86)	0.094 (18.74)	0.039 (80.75)	0.044 (27.36)	0.023 (7.56)	0.028 (8.69)	0.059 (19.76)	0.013 (7.50)	0.097 (15.26)	0.039 (48.02)	0.042 (19.33)
$\overline{E_t[D_{t+1}/P_t]}$	0.027 (4.42)	0.031 (7.74)	0.038 (7.02)	0.045 (11.24)	0.038 (8.43)	0.054 (12.07)	0.017 (4.50)	0.017 (6.33)	0.024 (12.75)	0.029 (8.71)	0.041 (9.77)	0.033 (7.23)	0.052 (8.96)	0.022 (6.50)
$\overline{E_t[R_{t+1}]}$	0.048 (10.00)	0.056 (15.12)	0.093 (21.63)	0.060 (13.47)	0.132 (78.41)	0.093 (18.44)	0.061 (16.75)	0.040 (16.47)	0.052 (12.76)	0.089 (35.26)	0.054 (15.49)	0.130 (62.60)	0.091 (13.85)	0.064 (32.03)

Table 2 : Lead-Lag Correlations Between the Expected *HML* Return and Business Cycle Indicators (1945–2005)

This table reports lead-lag correlations of the time series of the expected *HML* return with business cycle indicators. The list of cyclical indicators includes real investment growth (g^{INV}), real consumption growth (g^{CON}), default premium (DEF), and a recession dummy (Cycle). The row of numbers beneath each panel title indicates the number of leads and lags for the value premium. For example, the column below “–4” reports the correlations between the four-period-lag value premium and the current-period cyclical indicators. And the column below “4” reports the correlations between the four-period-lead value premium and the current-period cyclical indicators. Panel A reports the results for the full 1945–2005 sample, and Panel B reports the results for the 1963–2005 subsample. p -values testing zero correlations are reported in parentheses below the corresponding correlations.

		Panel A: 1945–2005								
		–4	–3	–2	–1	0	1	2	3	4
g^{INV}		–0.10 (0.45)	0.26 (0.04)	0.21 (0.11)	–0.03 (0.85)	–0.27 (0.04)	–0.15 (0.27)	0.33 (0.01)	0.08 (0.54)	–0.03 (0.82)
g^{CON}		0.03 (0.81)	0.19 (0.15)	0.18 (0.18)	–0.09 (0.49)	–0.48 (0.00)	–0.28 (0.03)	0.27 (0.04)	0.24 (0.07)	0.02 (0.90)
DEF		0.04 (0.74)	–0.10 (0.45)	0.02 (0.91)	0.28 (0.03)	0.38 (0.00)	0.24 (0.06)	–0.24 (0.07)	–0.31 (0.02)	–0.05 (0.70)
Cycle		–0.15 (0.27)	–0.14 (0.31)	–0.03 (0.81)	0.26 (0.05)	0.60 (0.00)	0.20 (0.12)	–0.41 (0.00)	–0.22 (0.10)	0.02 (0.86)
		Panel B: 1963–2005								
		–4	–3	–2	–1	0	1	2	3	4
g^{INV}		0.00 (0.98)	0.37 (0.02)	0.18 (0.26)	–0.23 (0.13)	–0.51 (0.00)	–0.30 (0.06)	0.36 (0.02)	0.30 (0.06)	0.12 (0.45)
g^{CON}		0.17 (0.28)	0.28 (0.07)	0.14 (0.38)	–0.24 (0.12)	–0.59 (0.00)	–0.41 (0.01)	0.23 (0.15)	0.39 (0.01)	0.08 (0.63)
DEF		0.04 (0.79)	–0.15 (0.35)	0.04 (0.81)	0.38 (0.01)	0.46 (0.00)	0.25 (0.11)	–0.27 (0.08)	–0.40 (0.01)	–0.16 (0.33)
Cycle		–0.21 (0.17)	–0.16 (0.32)	0.08 (0.60)	0.34 (0.03)	0.63 (0.00)	0.29 (0.06)	–0.38 (0.02)	–0.50 (0.00)	–0.17 (0.30)

Figure 1 : Time Series of Annual Realized Real Dividend Growth Rates for Value and Growth Portfolios (1945–2005)

This figure plots the time series of annual realized real dividend growth rates for value and growth portfolios, both one-way sorted (Panel A) and two-way sorted (Panel B). We construct value and growth portfolios using a one-way sort on book-to-market to form five quintiles and a two-by-three sort on size and book-to-market to form six portfolios à la Fama and French 1993. We construct dividend price ratios as $D_{t,t+1}/P_t = (R_{t,t+1} - R_{t,t+1}^X)(CPI_t/CPI_{t+1})$, where $R_{t,t+1}$ and $R_{t,t+1}^X$ are the nominal value-weighted portfolio returns with and without dividends, respectively, over the period from time t to $t+1$ for portfolios formed at time t . CPI_t is the consumer price index at time t . We measure the real dividend growth rates as $g_{t+1} = [(D_{t,t+1}/P_t)/(D_{t-1,t}/P_{t-1})](R_{t-1,t}^X + 1)(CPI_{t-1}/CPI_t) - 1$, where $D_{t,t+1}$ is the dividends paid over the period from time t to $t+1$ by the firms in the portfolio formed at time t .

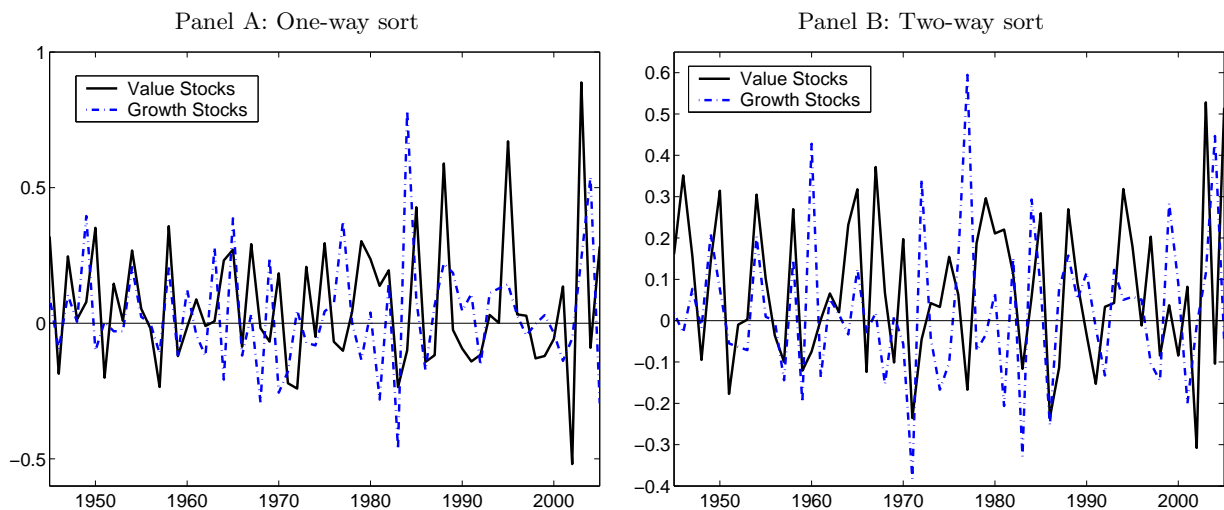


Figure 2 : Time Series Plots of the Expected Return, Expected Long-Run Dividend Growth, and Expected Dividend Price Ratio for *HML* and the Trend and Cyclical Components of the Expected *HML* Return (1945–2005)

We plot the times series of the expected return (Panel A) and its two components including the expected long-run dividend growth and the expected dividend price ratio (Panel B) for the *HML* portfolio. We also plot HP-filtered trend (Panel C) and cyclical components (Panel D) of the expected *HML* return. In Panel D, the shadowed rectangles represent the NBER recession dummy that takes the value of one in recessions and zero otherwise.

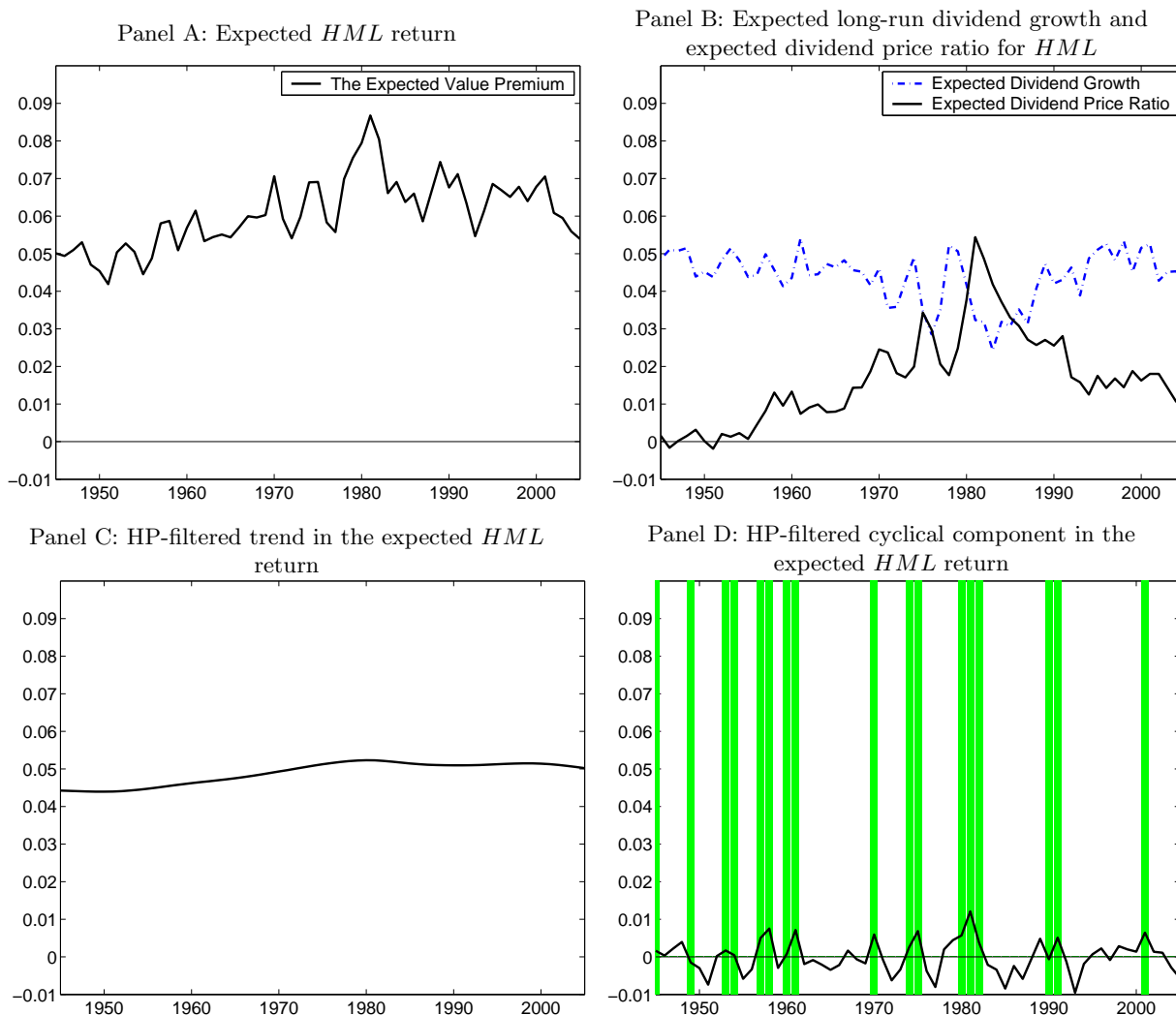
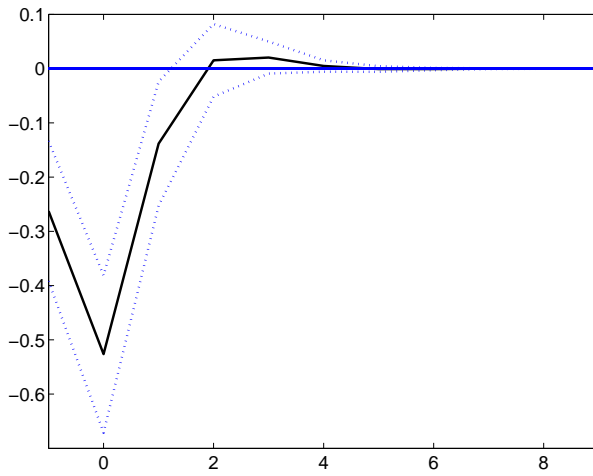


Figure 3 : Impulse Response Functions for the Expected *HML* Return in Response to a Positive One-Standard-Deviation Shock to Real Investment Growth and to Real Consumption Growth (1945–2005)

This figure plots the impulse response functions (the solid lines) for the expected *HML* return in the presence of a positive one-standard-deviation shock to real investment growth (Panel A) and to real consumption growth (Panel B). We also plot the two-standard-error bands (the dotted lines). The lag in the VAR is one, based on the Akaike information criterion. The VAR specification for the real investment growth is:
$$\begin{bmatrix} g_{t+1}^{\text{INV}} \\ X_t \end{bmatrix} = A \begin{bmatrix} g_t^{\text{INV}} \\ X_{t-1} \end{bmatrix} + \begin{bmatrix} \varepsilon_{t+1}^g \\ \varepsilon_t^X \end{bmatrix}$$
 where g_{t+1}^{INV} denotes the real investment growth from time t to $t + 1$ and X_t is the expected *HML* return measured at the beginning of time t . The VAR specification allows shocks to real investment growth, g_t^{INV} , to impact the contemporaneous expected *HML* return. The shocks also affect future expected *HML* returns because of the autocorrelations of the variables. The VAR specification with the real consumption growth is similarly defined.

Panel A: The response in the expected *HML* return to a positive one-standard-deviation shock to real investment growth



Panel B: The response in the expected *HML* return to a positive one-standard-deviation shock to real consumption growth

